

Thom

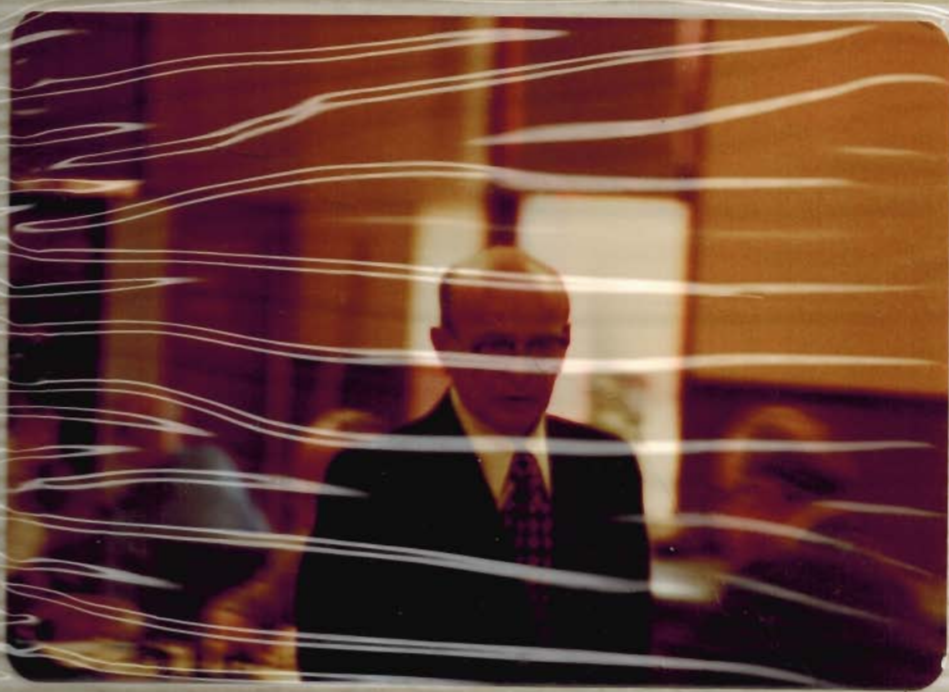


THE
TOMS RIVER CHESS
CLUB
PREZ....











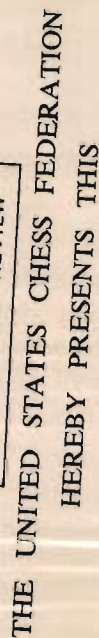












1977 Distinguished Service Award

TO

TOMS RIVER CHESS CLUB

IN RECOGNITION OF PARTICIPATION IN THE
USCF BUILDER MEMBERSHIP DRIVE AND NATIONAL CHESS DAY

[Signature]
USCF President

Martin E. Marino

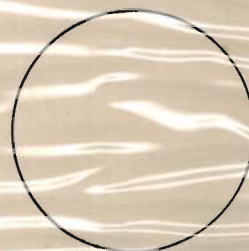
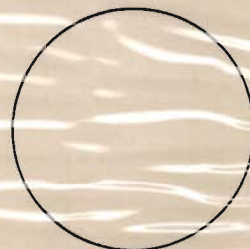
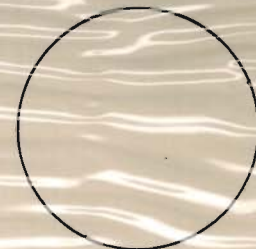
Executive Director

BUILDER
10 - 19 New Members

EXPERT BUILDER
20 - 59 New Members

MASTER BUILDER
60 - 99 New Members

GRANDMASTER BUILDERS
Over 100 New Members

NATIONAL CHESS DAY
Participant

People



Leo McLaughlin, Stafford Township, ponders a move at chess board. Ashbury Park Press

Chess ace back from trip

MANAHAWKIN — Leo McLaughlin, 16, has returned victorious from a major chess tournament in Iceland, called the Icelandic Chess Safari.

McLaughlin said he has been playing chess for about three years, after becoming interested in it by randomly picking up a chess magazine in the junior high school library.

"It seemed interesting and challenging, so I started learning all I could about it," he said.

MCLAUGHLIN SAID he soon became involved with the Toms River Chess Club and began increasing his knowledge, strategy and winning ways as a member of that group.

"We meet every Friday night for games. To date I have won the last summer open and the previous fall open sponsored by the organization," McLaughlin said.

McLaughlin, the son of



Mrs. Nancy McLaughlin here, said his abilities in chess lead him to a high calibre chess group in New York City called "Collin's Kids."

"The 'Collin's Kids' is a group of players from around the country. It numbers about 25 members in all, and everyone is extremely interested in chess.

"Yearly we hold competition with the Icelandic Chess Federation, and play the finest players that country has to offer in a three game series of 20 board matches at once," McLaughlin said.

"We alternate hosting the event and this year we went to Iceland. Everyone played well and we won the cup," he said.

McLaughlin said he won all three of his matches.

"Perhaps the most exciting part of the trip was after the tournament when we were all invited to meet the President of Iceland, Vigdis Finnbogadottir. It was her first official reception since taking office, and was the first time I was ever introduced to a female head of state," McLaughlin said.

McLaughlin said the trophy remains in New York at the Collin's Kids' clubhouse and will stay there until next summer when the Icelandic team comes to Grosvenger's Resort in the New York Catskills for a new tournament.

"I hope I get the chance to be there and help defend the cup," McLaughlin said.



PLOTTING A MOVE — Michael Wilder (left), a chess master from Princeton, concentrates on his next move as he plays 40 chess games simultaneously during an exhibition sponsored by the Towns River Chess Club at the Dover Township recreation building, last night. Wilder won 27 games, lost eight and drew five last night. The runner-up were Brian Schutte, Brian Township, Leo McLaughlin, Stafford Township, Ken Wilo', Lawrence Township, and Warren Young, Manchester Township. Wilder is ranked 34th among all players in the United States.

Bob Davison/Asbury Park Press



Asbury Park Press

CONCENTRATION — Leo McLaughlin, 16, Stafford Township, ponders a move in the Toms River Chess Club's Fall Open Tournament held Friday at the Dover Township Recreation Building, Whitesville Road. McLaughlin placed first for the second consecutive year and was the only one of 70 entrants to win all five of his games.



Asbury Park Press

CONCENTRATION — Leo McLaughlin, 16, Stafford Township, ponders a move in the Toms River Chess Club's Fall Open Tournament held Friday at the Dover Township Recreation Building, Whitesville Road. McLaughlin placed first for the second consecutive year and was the only one of 70 entrants to win all five of his games.

1980 Fall Open

At Left is pictured Leo McLaughlin in this copy of article clipped from Asbury Park Press

Other winners:

2nd-Dave Koval $4\frac{1}{2}$ - $\frac{1}{2}$
3rd-Mark Bennett- $4\frac{1}{2}$ - $\frac{1}{2}$
Top A-Ed Knowles-4-1
Top B-Bill Jaris-4-1
Top C-Ken Nelson-4-1
Top D-Ed Hermann- $3\frac{1}{2}$ - $1\frac{1}{2}$
Top E-Ed Czarnecki- $2\frac{1}{2}$ - $2\frac{1}{2}$
Top Unrated-Rich Trippe

Top Senior-Ed Haug
Top Junior-J.Barg
Highest Rated Upset

R.Bocchini vs/Knatz

514 points!!

78 Players

S.Doyle-T.D.

Good moves

Leo McLaughlin of Stafford Township helped score a first for the United States this summer. The Southern Regional High School junior, who has a deep interest in chess, was a member of the championship team that brought an international chess trophy to the this country.

McLaughlin, 16, was one of 20 young Americans who traveled to Reykjavik, Iceland, last month to challenge the cream of that country's junior chess players. He and his team mates, aged 10 to 17, were pitted against 20 Icelandic youngsters.

It was the third year that the New York chess tutor and organizer, John Collins, took his "Collins' Kids" team to Iceland. But it was the first time that the Americans came home with the prize.

McLaughlin, who has been playing for three years, was one of two Americans to win all three games each competitor played during the match. In overall scoring, the Americans won by a score of 2 to 1.

"It was a great experience," McLaughlin said. "Before this the farthest I'd traveled was to Michigan for a chess championship."

A highlight of the group's stay was a reception hosted by Iceland's president, Vigdis Finnbogadottir. The players were the guests of the Icelandic Chess Federation and the Reykjavik Chess Club.

Iceland's capital holds memories of chess history. The city was host to the widely publicized 1972 world championship match that pitted the American, Bobby Fischer, against the Russian master, Boris Spassky.

McLaughlin says he intends to continue playing in competition. He won the Toms River Chess Club's summer and fall open competitions last year, and last Memorial Day competed in the World Open in Philadelphia.

Chess tournament entries accepted

THE ANNUAL Louis A. Osborne Memorial Chess Tournament will be held March 28 and 29 at the Dover Township Recreation Building, Whitesville Road.

Proceeds from the event are donated to the Muscular Dystrophy Association.

The entry fee for the five-round, Swiss system tournament is \$10 if received by Wednesday, or \$13 at the playing site.

Advance entries can be sent to Edward Cohen, P.O. Box 792, Eatontown, N.J. 07724.

Registration will be conducted from 10 to

10:45 a.m. March 28, with first-round play scheduled to begin at 11 a.m.

Subsequent rounds are at 2:30 and 6 p.m. March 28, and at 12:15 and 3:15 p.m. the following day.

The time control is 40 moves in 80 minutes.

First prize is \$150, second \$70 and third \$30; first in classes B and C, each \$30; top player rated under 1,400, \$25, and top junior, \$15.

There are five points available in the 1981 Church's Grand Prix contest.



Asbury Park Press

WALL TOWNSHIP—Scott Mess (left), Hillside Township, ponders move against John McCarthy of Piscataway Township in 2nd annual Louis A. Osborne Memorial Chess Tournament yesterday at Dover Township Recreation Building. Proceeds of event, which drew 55 players and was won by Mess, go to Muscular Dystrophy Association, since Osborne died of the malady. The Wall Township resident would have been 19 last Thursday and a senior at Wall High.

Championship tournament in chess begins March 27

TOMS RIVER — The 1981 championship tournament of the Toms River Chess Club will begin March 27, and continue April 3, 10 and 11 and 12 at the Dover Township Recreation Building, Whitesville Road.

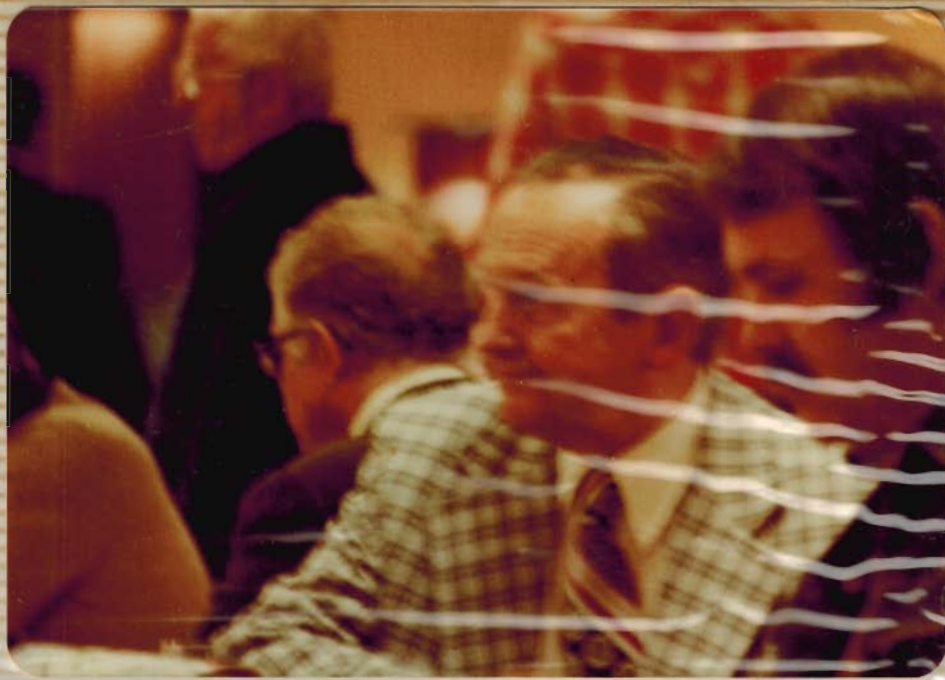
This year's event, a five-round Swiss system tournament, is being run in three sections — open, reserve and scholastic. The open section is available to all, the reserve to players rated under 1500, and the scholastic to players in elementary school or high

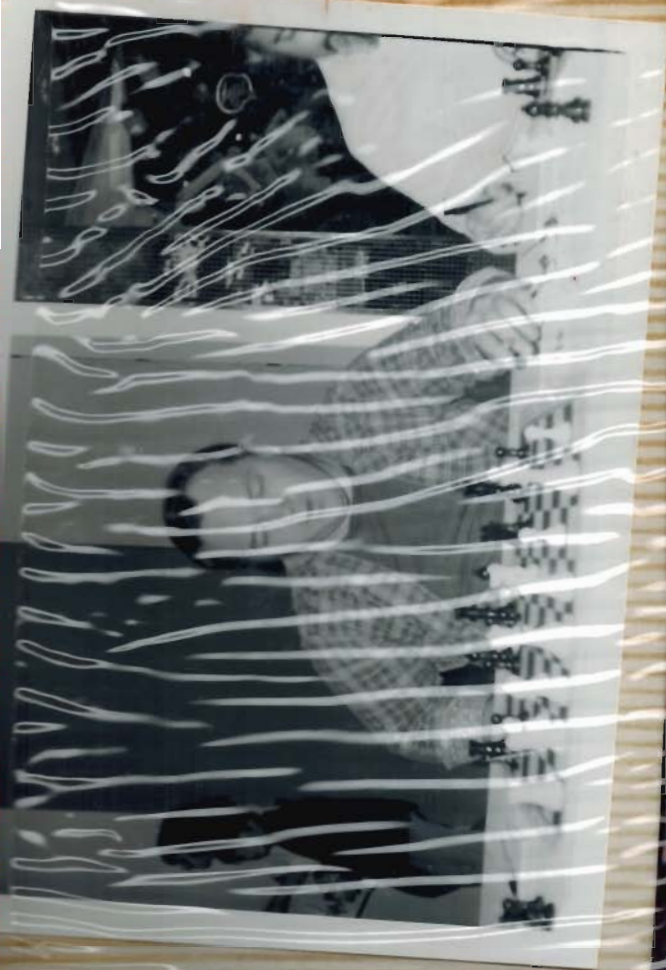
A, B and C in the open; for first and second places in Classes D and E in the reserve, and for first place in each two-grade class — 11th and 12th; 9th and 10th; 7th and 8th — and for first among elementary school students. There will be a prize for the best score by a senior age 62 or over.

The entry fee is \$6 for the open, \$5 for other sections, \$1 more if paid after March 13.

Entries should be mailed to Mark A. Bennett, 1912 Bay Boulevard, Point Pleasant 08742. Bennett will also accept entries at the club's Friday night meetings which are held at the recreation building.

Prizes will be awarded for first through fourth places and for first place in Classes







Chess club plans yule party

TOMS RIVER — Larry D. Brian, an international master from Brooklyn, will lecture Friday night at the Christmas party of the Toms River Chess Club.

The party, marking the club's 25th anniversary, is scheduled for 7:30 p.m. at the Dover Township Recreation Building, Whitesville Road. Admission, free to club members, \$5 to others, includes a Christmas buffet.

A tribute is planned for Steve Doyle, Island Heights, who is stepping down after 10 years as club president. Mark Bennett, Point Pleasant, will succeed Doyle.



Asbury Park Press

Laurence Epstein, Toms River, concentrates during a chess tournament.

Toms River man wins chess club tournament

TOMS RIVER — Laurence Epstein, here, is the winner of the Toms River Chess Club's annual fall open tournament that ended Friday night.

Epstein won five games and drew one for a $5\frac{1}{2}$ - $1\frac{1}{2}$ score to top the 57-player field in the six-round, Swiss-system event at the Dover Township Recreation Building.

Danny Pillone, Brielle, placed second at 5-1, and Dave Koval, Howell Township, was third with $4\frac{1}{2}$ - $1\frac{1}{2}$.

Ed Haug, Manchester Township, finished first in Class A, scoring $4\frac{1}{2}$ - $1\frac{1}{2}$, and Jerome Ayers, Brick Township, topped Class B with $3\frac{1}{2}$ - $2\frac{1}{2}$.

In the booster section, Mike Salas, Ocean Township, was first with a 5-1 record.

Other first-place finishers in the booster were Jim Carter, Lakewood, 5-1, Class C; Barry Charnick, Eatontown, $4\frac{1}{2}$ - $1\frac{1}{2}$, Class D, and Steve Charnick, Eatontown, 3-3, Class E.

Igal Brodetsky, here, was first in the scholastic section at 3-3, and Mike Elsterer, Point Pleasant, second, also 3-3.

Four prizes of United States Chess Federation memberships were awarded in a section for unrated beginners in which 16 players competed. Winners in the five-round Swiss were: Lowell Berg, here, $4\frac{1}{2}$ - $1\frac{1}{2}$, first; Jaime Bobbia, here, 4-1, second; Ron Blankley, Brick Township, $3\frac{1}{2}$ - $1\frac{1}{2}$, third; and John Bongione Sr., Beachwood, 3-2, fourth.





*The Board of Directors of
The Toms River Chess Club
hereby request the pleasure of your
company at a reception and party
hosted by E. Steven Doyle
on his last night as our President
for the very special occasion of our
20th Anniversary*

Friday, December 16, 1983

7:30 pm

*Special guest: Larry D. Evans,
International Master*

Refreshments

Door prizes



Toms River Chess Club

MEETS FRIDAYS 7 P.M.
DOVER TOWNSHIP RECREATION BUILDING
WHITESVILLE ROAD
TOMS RIVER, NEW JERSEY

E. STEVEN DOYLE, PRESIDENT



Toms River Chess Club

MEETS FRIDAYS 7 P.M.
DOVER TOWNSHIP RECREATION BUILDING
WHITESVILLE ROAD
TOMS RIVER, NEW JERSEY

E. STEVEN DOYLE, PRESIDENT



*The Board of Directors of
The Toms River Chess Club
hereby request the pleasure of your
company at a reception and party
hosted by E. Steven Doyle
on his last night as our President
for the very special occasion of our
20th Anniversary*

Friday, December 16, 1983

7:30 pm

*Special guest: Larry D. Evans,
International Master*

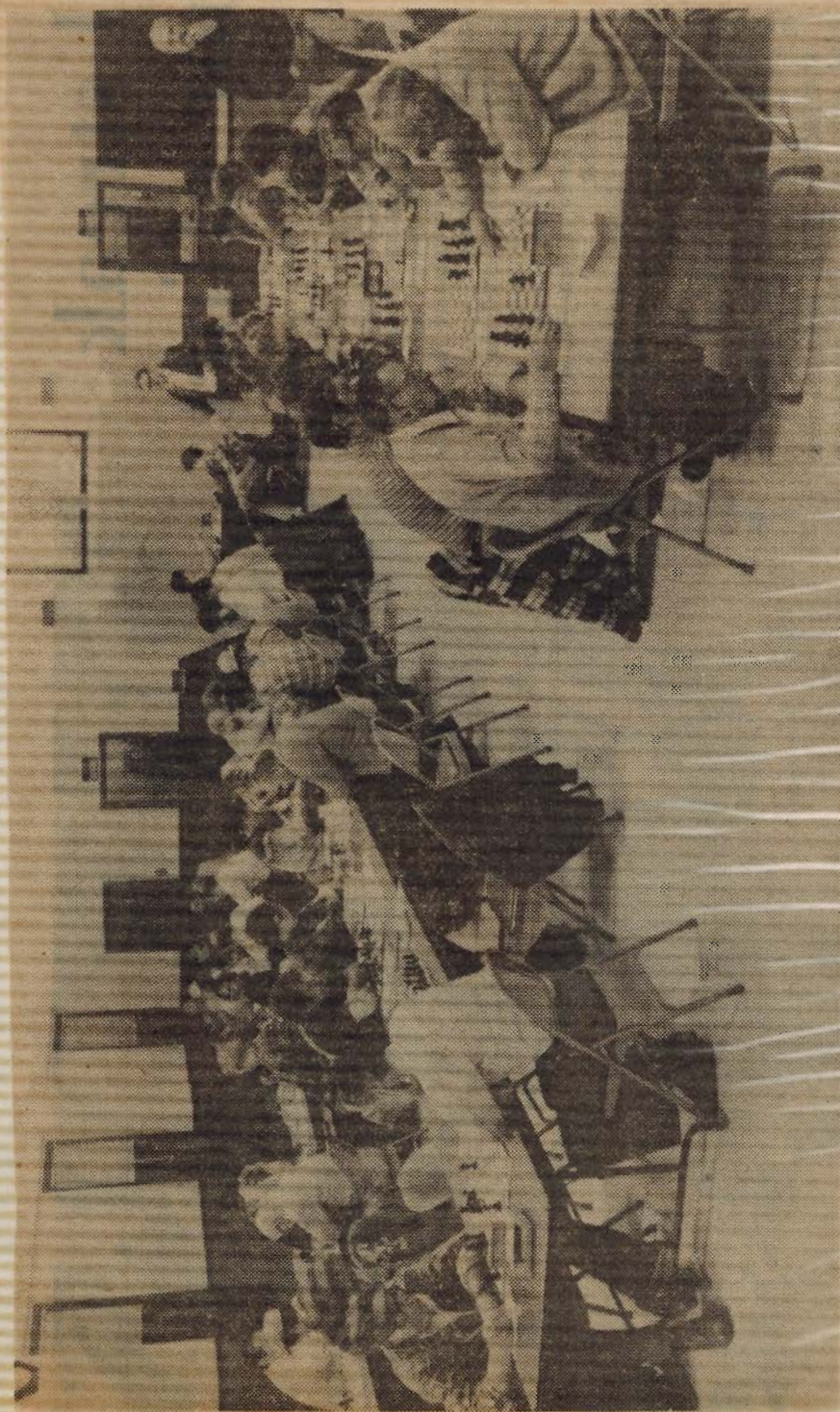
*Refreshments
Door prizes*



Toms River Chess Club

**MEETS FRIDAYS 7 P.M.
DOVER TOWNSHIP RECREATION BUILDING
WHITESVILLE ROAD
TOMS RIVER, NEW JERSEY**

E. STEVEN DOYLE, PRESIDENT



TOURNAMENT ENDS — The 60 entrants in the fall tournament of the Toms River Chess Club played the fifth and final round of the annual event Friday night at Dover Township Recreation Building. Toms River. The winner was 15-



Asbury Park Press

year-old Leo McLaughlin (right) of Stafford Township, who won five straight games for a final score of 5-0. Club president Steve Doyle was tournament director. The Toms River club meets Friday nights at the recreation building.

Queen Can Be Expendable

By HARRY T. CONOVER

Most players are reluctant to part with the queen — and understandably so. After all, the queen is the most powerful piece on the board, able to go off in many directions to lead or back up mating attacks, or to decimate the enemy forces.

Then, too, the queen, like a good wife, is a great solace in times of adversity, defending staunchly against attacks and often saving the day by perpetual check when the game seems about to go down the drain.

There are times, though, when it becomes necessary to part with the queen, either to mate, gain a decisive positional advantage, or permit a combination leading to victory. Sometimes the queen can be given up for some minor pieces with the expectation that the opposing queen won't be able to cope with the harassment of weaker but more numerous forces.

That was what Dave Koval of Howell Township had in mind when he gave up his queen as early as the ninth move in a game played in Grandmaster Leonid Shamkovich's simultaneous exhibition at the Toms River Chess Club. In that case, Koval swapped his queen for a rook and two minor pieces, a play that resulted in his being one of the two players who defeated the grandmaster. Shamkovich also allowed seven draws in the 41 games he played.

The snappy little sequence whereby Koval picked up three pieces for the queen in the opening is worth careful study. Needless to say, adopting such a line against a grandmaster, even in simultaneous play, requires a high degree of courage.

Here is the score:

FRENCH DEFENSE

White	Black
Shamkovich	Koval
1 P-Q4	P-K3
2 P-K4	P-Q4
3 N-Q2	...

This move of Tarrasch has become the most popular way of meeting the French Defense today. Otherwise, with 3 N-QB3, B-N5 White can run aground on the shoals of the still seaworthy Winawer Variation.

3 ... Pxp

An oilbeat reply, examples of which are hard to come by. Similar is 3...., N-QB3; 4 P-B3, FxP; 5 NxP, N-B3; 6 NxN, QxN; 7 N-B3, P-KR3; 8 B-K3, B-Q3; 9 Q-Q2, O-O; 10 O-O-O, P-K4; 11 P-Q5, N-K2; 12 P-B4, P-QN3 with equality as in Mednis-Kramer, U.S. championship 1962.

4 NxP	N-KB3
5 NxN	QxN
6 N-KB3	PxKR3
7 P-KR4	...

Renewing the threat 8 B-N5, for now 8...., PxB?; 9 PxB appears to win the exchange.

7 ... N-B3!?

Black seems to ignore the threat.

8 B-N5	PxB
9 PxB	QxN1!

Uncovering a spectacular way out of White's trap.

10 QxQ RxR

Coming out with a rook, knight and bishop for the queen — not a bad bargain.

11 O-O-O B-K2

Black rejects 11...., NxP; 12 RxN, RxBch; 13 R-Q1, RxRch; 14 KxR, as offering White too much counterplay.

12 Q-K3 B-Q2
13 P-N6 ...

Seizing the chance to compromise Black's kingside pawn formation.

13 ... Pxp
14 B-Q3 RxRch
15 KxR O-O-O!

Indirectly protecting the menaced king knight's pawn, for if now 16 BxP??, then 16...., NxP! and the knight cannot be captured.

16 P-QB3 P-K4!
17 P-Q5 ...

Avoiding the perilous 17 Pxp, B-KB4!

etc.
17 ... B-KB4
18 B-K4 ...

Here, 18 BxBch, PxB would straighten out Black's pawns and leave White with few chances for counterplay.

18 B-B3
19 K-K1 BxB
20 QxB N-K2
21 P-QB4 P-KN4

So far, so good. Black has three pieces against the queen and he is in no immediate danger.

22 Q-N4ch K-N1
23 Q-K6 R-Q3
24 Q-B7 P-QN3

Black's plan is to destroy White's advanced queen's pawn, after which he will be able to bring force to bear upon the white king.

25 P-QN4 P-R3
26 K-K2 P-N4
27 Pxp ...

Making the best of a no-choice situation.

27 ... NxP
28 Pxp N-B5ch
29 K-B3 RxP
30 P-R4 N-K3

Naturally, not 30...., RxP??; 31 Q-K8ch, etc.

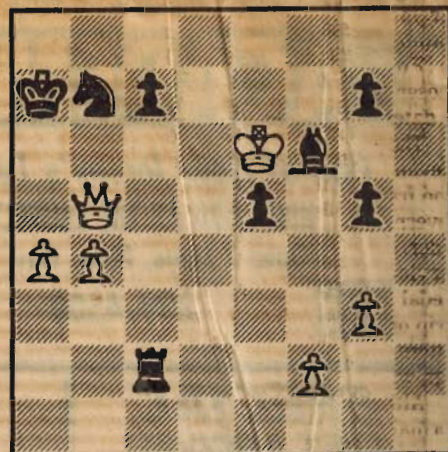
31 K-N4 N-Q1
32 Q-K8 R-B3

Black is playing carefully and well. He threatens 32...., R-B7 which White cannot prevent.

33 K-B5 ...

Lacking other resources, White must bring his king into the fray.

33 ... R-B1
34 Q-N5ch N-N2
35 P-N3 K-R2
36 K-K6 ...



Position after 36 K-K6

36 ... R-B3ch!
37 K-Q7 ...

Not 37 QxR??
N-Q1ch etc.
37 ... R-Q3ch

The white king appears to have walked into a mating net.

38 KxP B-Q1ch
39 K-B8 B-N6!

The clincher, threatening 40...., R-Q1-mate.

40 Q-K8 R-Q1ch

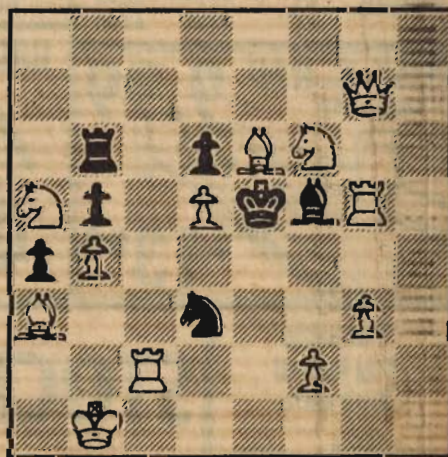
And White resigns.

CHESS PROBLEM NO. 619

B.P. Barnes
2nd Prize

Lublin, Poland, Tourney
1973

Black 7 men



White 12 men

White mates in 2 moves

Chess Problem No. 618 is solved by 1 QxRP, threat 2 NxP(N5)dis ch, K-B3; 3 N-R7. 2...., K-K3; 3 N-B7. 2...., K-B5; 3 NxN. 2...., K-K5; 3 N-B3. 1...., R-QB8; 2 NxBPdis ch, K-K3; 3 N-N7. 2...., K-K5; 3 N-N3. 2...., K-B3; 3 N-K7. 2...., K-B5; 3 N-K1. 1...., P-N3; 2 N-B3dis ch, K-B3; 3 QxP(N6). 2...., K-K3; 3 R-Q6. 2...., K-B5; 3 NxP. 2...., K-K5; 3 Q-R8. 1...., PxB; 2 NxNdis ch, K-K3; 3 N-R6. 2...., K-B3; 3 R-Q6. 2...., K-K3; 3 B-R7. 2...., K-B5; 3 NxP. 1...., BxR; 2 N-B4dis ch, KxN; 3 BxN. 2...., K-K5; 3 N-Q2. 2...., K-K3; 3 Q-N6. 2...., K-B3; 3 Q-N6. A remarkable composition. Really a tour de force.

P R O C L A M A T I O N

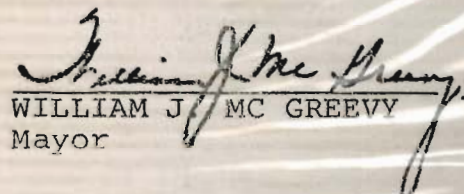
WHEREAS, George Koltanowski of California is a past president of the United States Chess Federation; and,

WHEREAS, George Koltanowski was given a medal by the World Chess Federation in 1974 for his great donations of time and effort to chess; and,

WHEREAS, George Koltanowski is recognized as the "Johnny Appleseed" of Chess; and,

WHEREAS, George Koltanowski is recognized by the Governing Committee of Dover Township as a significant contributor to chess in the United States;

NOW, THEREFORE, I, WILLIAM J. MC GREEVY, MAYOR OF THE TOWNSHIP OF DOVER, IN THE COUNTY OF OCEAN, STATE OF NEW JERSEY, with the concurrence of the Township Committee officially recognize the personal achievement of George Koltanowski and thank him for his endeavors in the advancement of chess in the United States.


WILLIAM J. MC GREEVY
Mayor



